

NURSERY TO X
CBSE - 430439

BroadwayEduSystem

- Innovative Educational Approach.
- Research Based Structured Curriculum
- 21st Century Learning Skills
- Under 7 & Wonder 7 Model for Nursery to Grade II
- Unique 'Learnology' for Grade III to X



**BROADWAY™
INTERNATIONAL
SCHOOL**

Living - Learning - Leading

📍 NEAR VIP ROAD

Nr. Shyam Mandir, B/h. Atlanta Shopping Mall,
Althan-bhimrad Canal Road, Althan.

☎ 99 241 95 200 | 99 241 95 300

✉ broadway.academic@gmail.com 🌐 www.broadwayinternationalschool.com

📘 [Broadwayinternationalschoolsurat](https://www.facebook.com/Broadwayinternationalschoolsurat) 📷 [Broadwayinternationalschool](https://www.instagram.com/Broadwayinternationalschool) 📺 [Broadway International School Surat](https://www.youtube.com/BroadwayInternationalSchoolSurat)

We don't just
teach
we
transform

PROSPECTUS



**BROADWAY™
INTERNATIONAL
SCHOOL**

Living - Learning - Leading

VISION & MISSION

TO NURTURE ACADEMIC EXCELLENCE,
HUMAN EXCELLENCE &
SOCIAL EXCELLENCE
THROUGH 21ST CENTURY SKILLS.

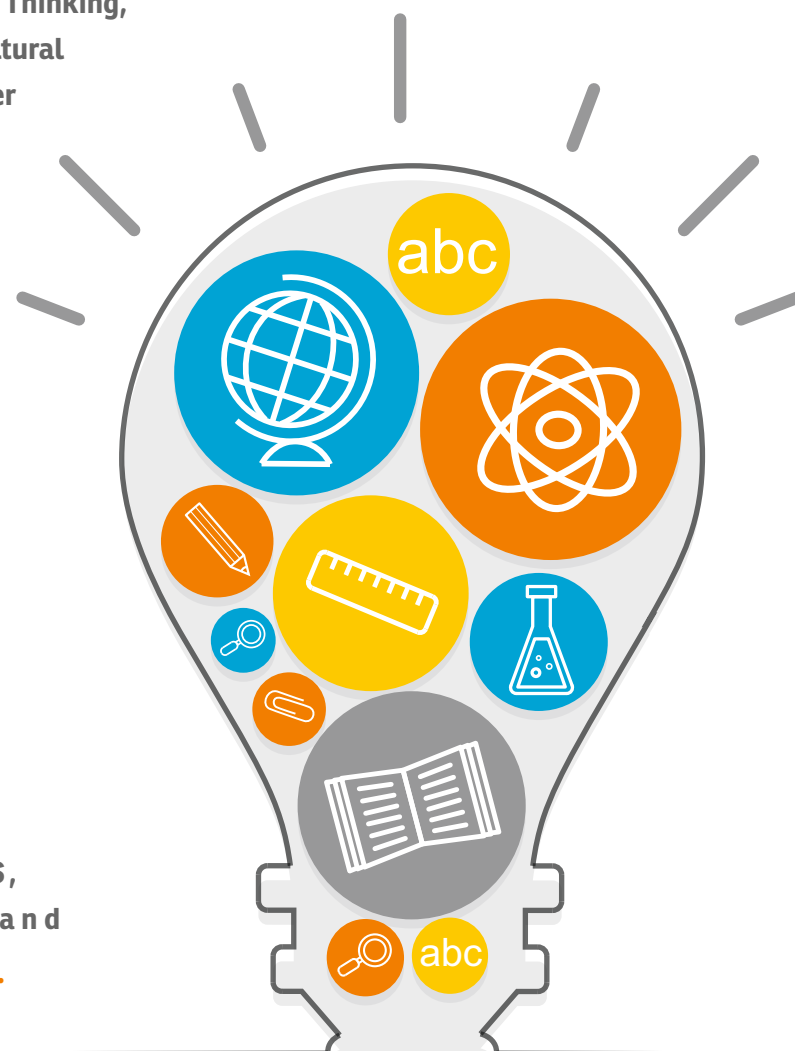
OUR EXPRESSIONS

The inception of Broadway International School is a Journey of Dreams, Determinations, Dedications, Demonstrations, Directions, Discipline, Dignity and creating DIFFERENCE in education with our immense innovative efforts. The Joy of EDUCATION is not just INFORMATION but TRANSFORMATION of an individual. World has revolutionised almost every aspect of our education. The dynamism of education is such that it has taken LEAP from SLATE to TABLET in just 10 -15 years. Challenges are many as 21st century learning demands much more than just classroom teaching.

Frameworks for 21st century learning are Critical Thinking, Creative Thinking, Collaborative Skills, Cross-Cultural understanding, Communication Skills, Computer skills and Career Skills. Our prime purpose is to awaken the true potentials of students and to convert it into their ever best performances. Someone has rightly said "The Future of world is in Classroom, Which lead children beyond classrooms. "To attain our Exclusive purpose we are constantly Exploring, Experimenting, Experiencing, Exceeding, Expanding and ultimately Excelling.

We are LOOKING FORWARD with Greater Vision and Greater sense of Direction to establish new BENCHMARKS in time to come. Our Zeal and Zest will push us towards new horizon of possibilities. We are very sure as we believe in POTENTIALS, POSSIBILITIES, POSITIVITY, PROCESS, PROGRESS and
Committed for highest Educational Qualities...

-Broadway Management



OUR VALUES

OUR VALUES ARE BASED ON ETERNAL
PRINCIPLES OF MOTHER NATURE

Nature has
PURPOSE

Highest priority is to just
focus on MEANINGFULNESS
in all the creations of school.

Nature CARES
for Everything

Highest priority is to just
focus on MEANINGFULNESS
in all the creations of school.

Nature is
ORGANIZED

SYSTEMIZED approach for
all the processes is our aim
for gaining excellence.

Nature
BALANCES
everything

BALANCED development is
the prime focus of our school

Nature
believes in
CO-OPERATION

CO-OPERATION is essential
practice for each individual
in school

We believe Continues progress
is the surest way of
everlasting growth.

Nature is
PROGRESSIVE

We believe every worthwhile
development demands
PATIENCE

Nature has
PATIENCE

We value everything and everyone
who enrich the learning of our
students.

Nature VALUE
everything

Our achievement is when our
students will be self dependent.

Nature is
INDEPENDENT

We nurture environment
friendly attitude and actions
in our school.

Nature's way
is **GREEN WAY**



Unique Concept For Pre-primary to Grade - 2

PLAYING
IS LEARNING

THINKING
IS LEARNING

FEELING
IS LEARNING

ENGAGING

DEVELOPING UNDERSTANDING

"Tell me and I Forget. Show me and I remember. Involve me and I Understand"
To engage student in meaningful activities of learning

ENQUIRING

DEVELOPING CURIOSITY

"Don't just answer their question, question their answers too"
To design and ask age appropriate questions which strike to kids curiosity on daily basis

EXPERIMENTING

DEVELOPING SCIENTIFIC TEMPERAMENT

"All life an experiment. All progress is experimental."
To explore the world of science through specially designed experiments for kids

EXPLORING

DEVELOPING PROCESS THINKING

"To know the process of making of anything provides many insights."
To explore various making process of daily things educate kids with amazing knowledge and understandings

EXPERIENCING

DEVELOPING SENSORY SKILLS & LIFE SKILLS

"The most rewarding and important type of learning is though experience, seeing something with our own eyes." To cultivate thinking, concentration, creativity & observation though various sensory activities & Role Plays.

EXAMPLE

DEVELOPING LANGUAGE SKILLS

"Imaginative stories and Real life examples are the most amazing blend to convey meaning and emotions." Daily interactions on daily incidents and events build their overall language skills.

EMOTIONAL INTELLIGENCE

DEVELOPING SELF-AWARENESS & SOCIAL AWARENESS

"It takes something more than intelligence to act intelligently."
To aware kids about their emotions and to make them aware about other's emotions through various role plays, games, discussions etc."

Revolutionary Approach
in Early Education



ACTIVITY BASED LEARNING

for better understanding of concept

ABL

BRAIN BASED LEARNING

for higher retention & productivity

BBL

CLUB BASED LEARNING

for developing their interest & skill

CBL

GROUP BASED LEARNING

for greater participation & self expression

GBL

HOUSE BASED LEARNING

for Healthy inner competitions & co-opration

HBL

INDIVIDUAL PORTFOLIO

BASED LEARNING

for learning to chart student's progress

IPL

VBL

VALUE BASED LEARNING

for establish core values in student's life

SBL

SKILL BASED LEARNING

is the essence of our each learning process

PBL

PROJECT BASED LEARNING

for independent learning & joy of discovery

WBL

WORKSHEET BASED LEARNING

for sufficient practice of classroom learning

RBL

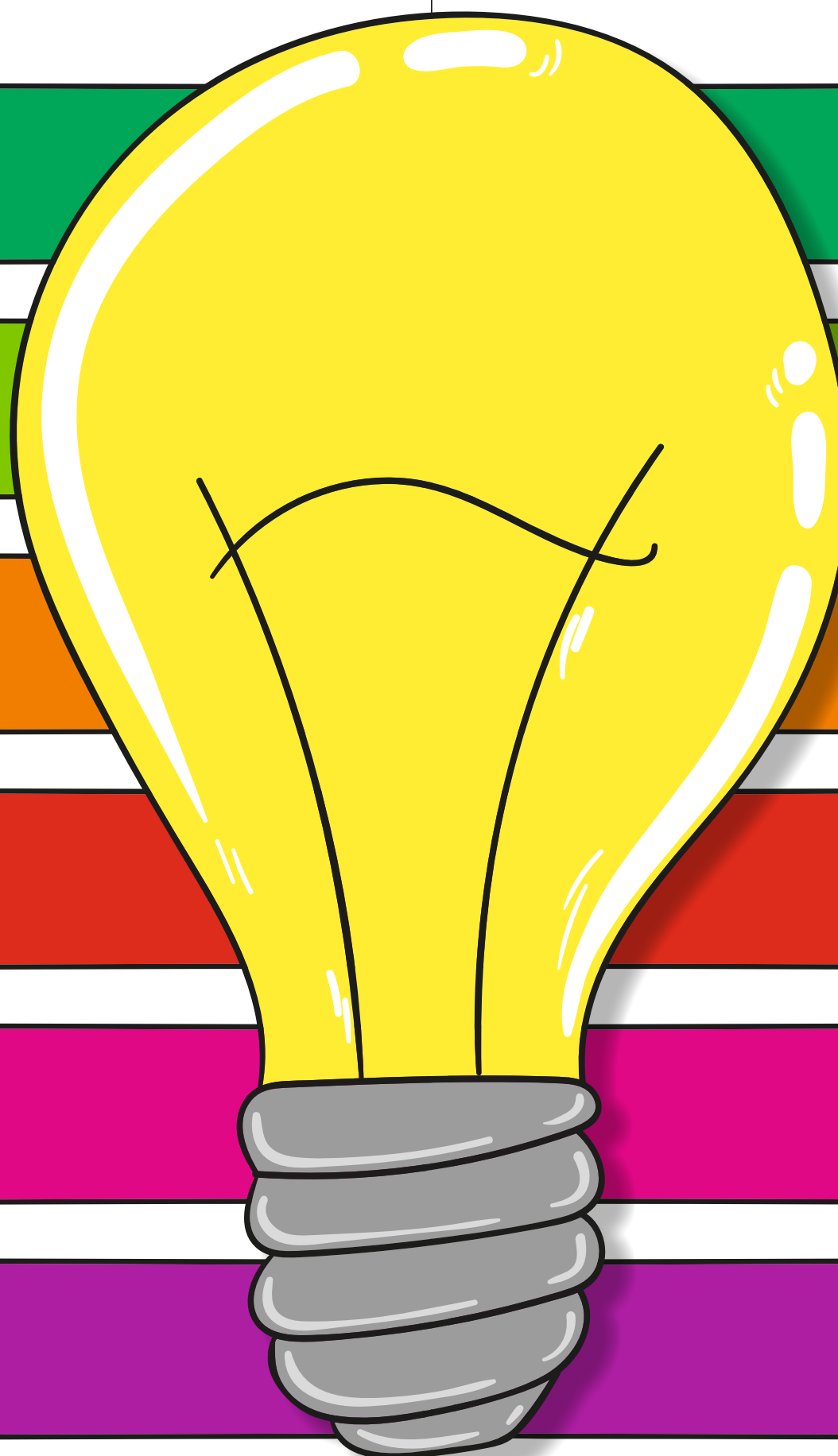
RESEARCH BASED LEARNING

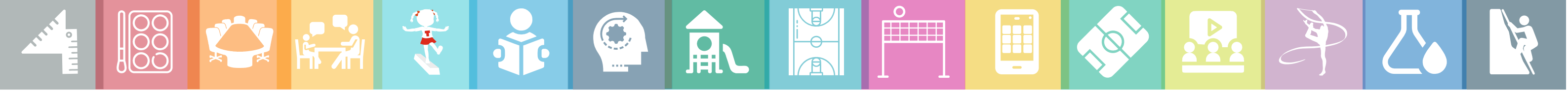
for continuous upgradation of learning

TBL

TECHNOLOGY BASE LEARNING

for smart learning to smart generation





FACILITIES



EVENTS & CELEBRATIONS

YOGA DAY
(21st JUNE)

FREEDOM FIGHTER DAY
(11-aug)

PARENT ORIENTATION PROGRAM

FIELD TRIP
(1-7)

INDEPENDENCE DAY
(15 Aug)

JANMASHTAMI
(11th Augh)

OPEN HOUSE
(3.11)

MANGO DAY

CLAY MODELLING

PTM
(4-8-18)

BEST OUT OF WASTE

BLOCK CELEBRATION

FIELD TRIP TO PLANT NURSERY

POETRY PATROL

FIELD TRIP TO BRTS

MYSTERY BOX

RHYME RELAY

FUN GAMES

MESSY MOMENTS

POSTER MAKING

LIBRARY SCAVENGER

LET'S VISUALIZE

MOTHER'S DAY
(10TH MAY)

OPATRIOTIC SONG COMPETITION G-1 & 2
(15 AUG)

TEACHER'S DAY THROWBACK
(5 SEP)

GRAND PARENTS DAY
(14 SEP)

ANIMAL KINGDOM-NURSERY
(19 SEP)

ALL ABOUT ANIMALS-UKG
(02 SEP)

1ST SPORTS DAY ENTHUSIA

VIRTUAL SPECIAL ASSEMBLY - LKG
(18 SEP)

VIRTUAL SPECIAL ASSEMBLY - UKG
(18 SEP)

GRATITUDE DAY
(21 SEP)

COLOURING COPETITION

ENRICHMENT ACTIVITY G-1 & 2
(24 SEP)

CREATIVE PROJECT G-1
(23 SEP)

ENRICHMENT ACTIVITY
(26 SEP)

ENRICHMENT PROJECT G-3
(25 SEP)

VIRTUAL GARBA
(25 OCT)

BROADWAY KITCHEN EXPRESS

VIRTUAL FIELD TRIP NURSERY
(26 SEP)

ENRICHMENT PROJECT G4
(26 SEP)

ENRICHMENT ACTIVITY G-1 = MEANS OF TRANSPORT
(28 SEP)

ENRICHMENT ACTIVITY G-5
(30 SEP)

VIRTUAL FIELD TRIP-LKG
(27 SEP)

LANGUAGE ENRICHMENT ACTIVITY G-1 TARANG
(9 OCT)

ENRICHMENT PROJECT G-4
(6 OCT)

SPECIAL ANIMAL ASSEMBLY-LKG
(11 OCT)

FANCY DRESS COPETITION G-1 UMANG & TARANG
(18 OCT)

SPECIAL ASSMBLY (VEGGIES) -UKG
(12 OCT)

MONOLOGUE COMPETITION G-3 & 4
(15th Aug)

FANCY FRESS COMPETITION G-2
(19 OCT)

ENRICHMENT ACTIVITY G-5 = HCF
(12 OCT)

POTLUCK PARTY
(14 NOV)

DIWALI CELEBRATION
(12 NOV)

VIRTUAL DIWALI
(9 NOV)

WONDER ZONE DIWALI ACTIVITY
(20 NOV)

TORAN MAKING THIS DIWALI
(13 NOV)

